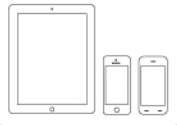
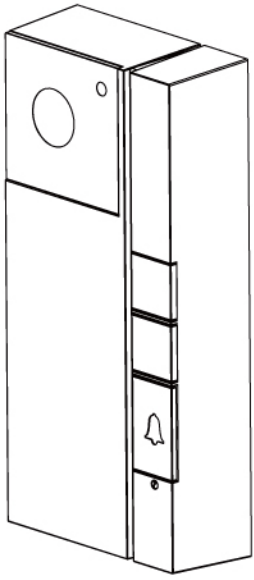


# D1 Doorbell Camera



## Setup the doorbell from a Smartphone/Tablet



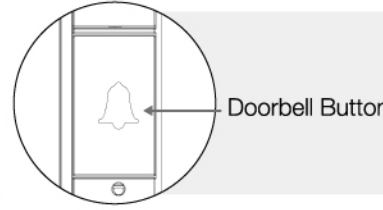
### Supported smartphone system version

- iOS iPhone \ iPad  
Requires iOS 10.0 or later
- Android Smartphone \ Tablet  
Requires Android 5.0 or Later

Download the mCamViewZ+ user manual here.  
<http://www.starvedia.com/download.html>

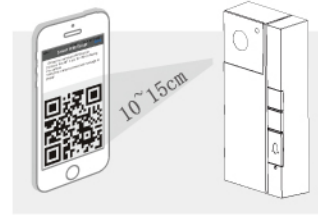


# Quick Installation Camera



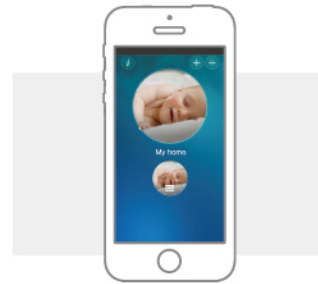
### Make Sure it Start to Scan

For the first time setup(or after reset), after powered on, the doorbell will be doing the QR code scanning, the LED is spreading out and in continuously. ( in other situation, within 3 minutes after the doorbell is powered on, you can press the bell button three times in 2 seconds to start the QR code scanning)



### Scan the QR Code

Place your mobile about 10-15cm away from the doorbell camera lens.  
 The doorbell will beep when the QR code is successfully scanned. It will scroll down the LEDs and start the WiFi connection.



### WiFi Connection is Established

When the WiFi connection is established, the blue LED will stop flashing.  
 The new icon for this doorbell will be created on the App.

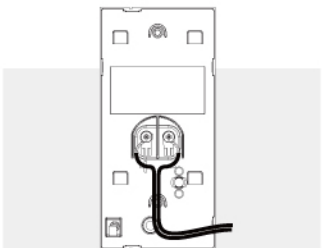
## STEP 1 Download the mCamViewZ+ APP



mCamViewZ+

Scan the QR code to download the software "mCamViewZ+" from App Store for iPhone or from Android Play Store for Android mobile.

## STEP 2 Power on the Doorbell



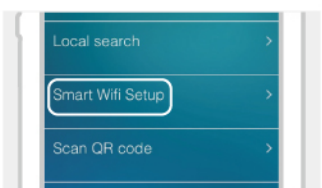
Connect the power cable to the Doorbell. (following the instruction on next page)  
 After the doorbell is powered on, it is necessary to complete the WiFi setup within 3 minutes.

## STEP 3 Smart WiFi Setup



### Mobile Connected to 2.4G Hz WiFi

Make sure your iPhone/Android mobile is connected to a 2.4G Hz WiFi router, this is a must.



### Run the App

Open the App mCamViewZ+, go into one of the gateway in the gateway list, click the "camera" icon, click the "+", choose "Smart WiFi setup" and follow the steps on the App to setup the WiFi connection.

### Generate QR Code

Follow the steps and enter the WiFi password to generate a QR code.

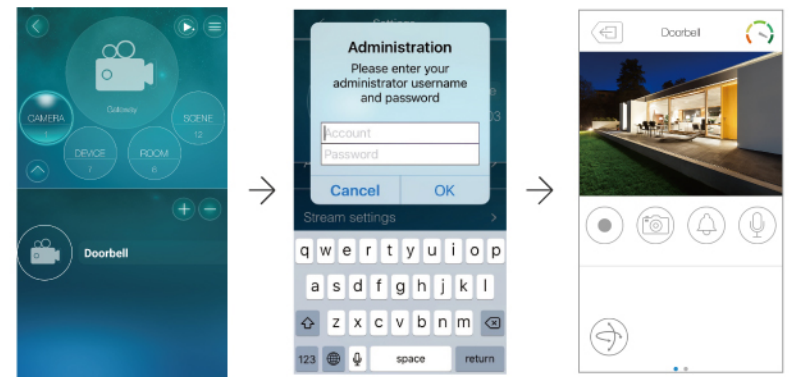


## STEP 4 Log in to the Doorbell

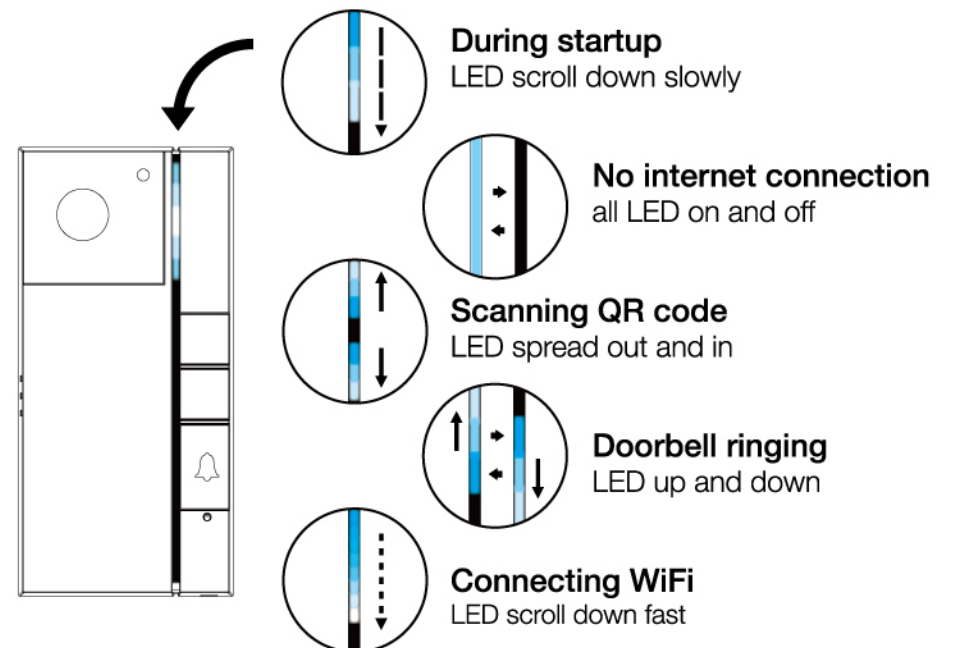
Tap the doorbell icon to log in to the doorbell. The default administration account is "admin", the default administration password is empty (leave blank).

After logged in, tap the doorbell icon to play the live video.

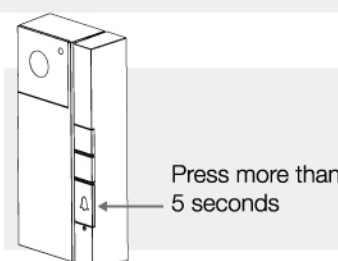
\* Notice : there are two passwords for the doorbell, one is the administration password, the other one is the video play password. The default video-play password is "ipcam" (lowercase).



## LED Indication

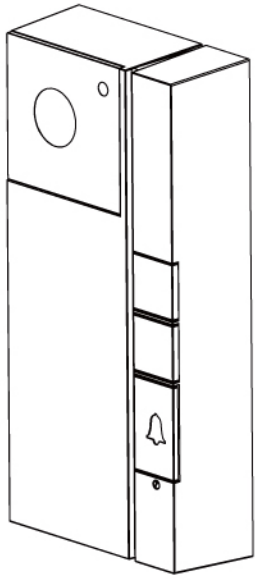


## How to do the Reset



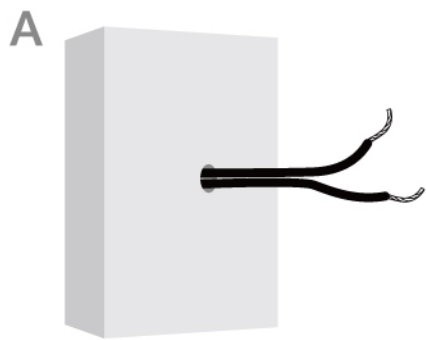
Within 3 minutes after the doorbell is powered on, press the bell button for more than 5 seconds and release, the doorbell itself will reset to the default settings and reboot itself.

## How to Install the Doorbell

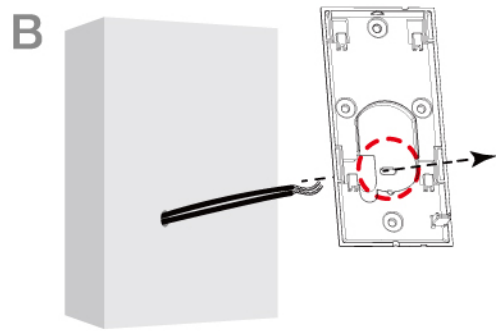


The followings are a detailed description of how to install the doorbell gateway on the front door and about the power cord wiring.

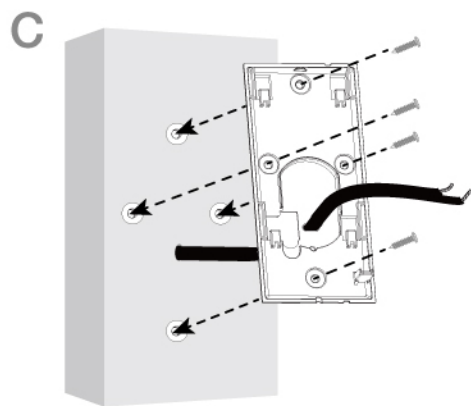
### STEP 1 Install the Back Plate



**A.** Find the power cord on the wall of the front door, the voltage of the power cord is AC 12V~24V, or DC 9V~24V,10VA.

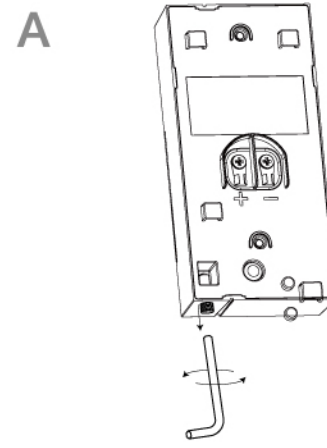


**B.** Manage to pass the power cord through the back plate of the doorbell.

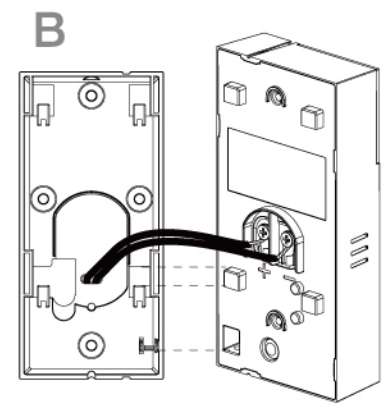


**C.** Fix the back plate on the wall with the anchor.

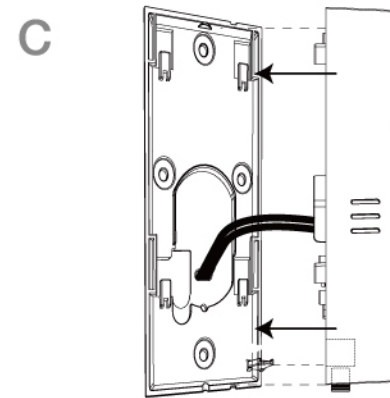
### STEP 2 Mount the Doorbell Body



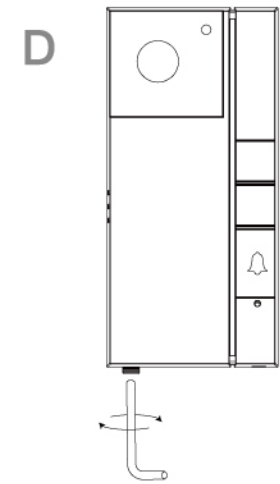
**A.** Loosen the screw on the button of the doorbell body.



**B.** Wire the power cord to the back of the doorbell body and fasten it with the screw.

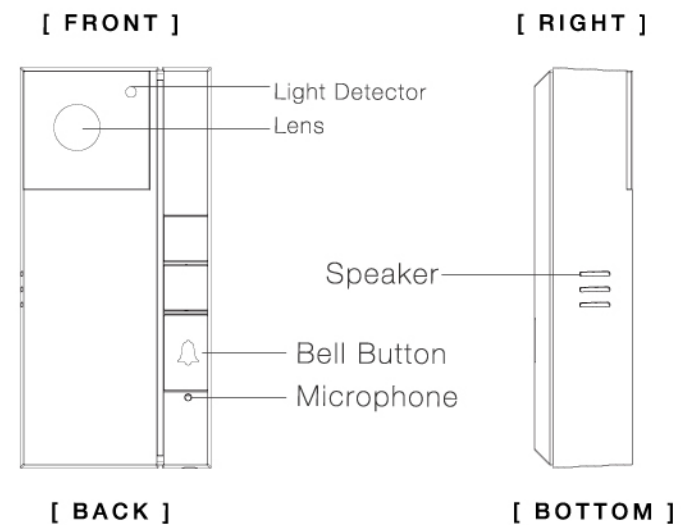


**C.** Hook the doorbell body to the back plate.



**D.** Lock the doorbell body to the back plate by the Allen wrench.

### Product View



[ FRONT ]

[ RIGHT ]

[ BACK ]

[ BOTTOM ]

### Package Contents



D1 Doorbell Body

D1 Back Plate

ID/Password Card

QIG

Anchors and Screws

Allen Wrench