

Mini Full HD IP Camera



User Manual

Revision: 040112

Date: 2017/08/01

For firmware version v040112

Table of Contents

1.	INTRODUCTION.....	4
2.	HARDWARE DESCRIPTION AND QUICK INSTALLATION/USAGE	6
2.1.	MAJOR HARDWARE COMPONENTS.	6
2.2.	QUICK INSTALLATION AND USAGE	8
2.3.	MANAGE THE CAMERA ON THE COMPUTER	10
2.4.	PUSH NOTIFICATION	12
2.5.	TIME LAPSE VIDEO RECORDING	13
3.1.	INFORMATION	15
3.2.	WiFi SECURITY	16
3.3.	VIDEO SETTINGS	18
3.4.	MOBILE VIDEO SETTINGS.....	20
3.5.	NIGHT MODE CONTROL	21
3.6.	EMAIL/FTP ALARM	22
3.7.	SPEAKER ALARM SETTINGS	25
3.8.	NAS SETTINGS.....	26
3.9.	CLOUD STORAGE SETTINGS.....	28
3.10.	SD-CARD SETTINGS	30
3.11.	SCHEDULING	32
3.12.	LED DISPLAY CONTROL	34
3.13.	DATE/TIME.....	35
3.14.	ADMIN.....	36
3.15.	UPGRADE	37
3.16.	REBOOT.....	38
3.17.	SET TO FACTORY DEFAULT.....	39
4.	FEATURES AND SPECIFICATIONS.....	40
4.1.	FEATURES	40
4.2.	SPECIFICATIONS.....	41
5.	PACKAGE CONTENTS.....	43
	APPENDIX A. REMOTE VIEWING THROUGH NAT/ROUTER DEVICES.....	44
	APPENDIX B. PERFORMANCE INFORMATION	45
	APPENDIX C. TROUBLE SHOOTING.....	46
	APPENDIX D. SNAPSHOT PICTURE ON ANY BROWSER.....	48

List of Figures and Tables

- Figure 2-1: Major components in the front panel
- Figure 2-2: Major components in the back panel
- Figure 2-3: Download the latest CamView software
- Figure 2-4: The ID/Password card
- Figure 2-5: Running window of CamView program
- Figure 2-6: Pop-up play-video password window
- Figure 3-1: Open the web configuration page from CamView software
- Figure 3-2: IP CAM Web configuration login page
- Figure 3-3: IP CAM Information page
- Figure 3-4: WiFi security enabled page
- Figure 3-5: Advanced network settings page
- Figure 3-6: Video settings page
- Figure 3-7: Mobile video settings page
- Figure 3-8: Night mode control page.
- Figure 3-9: Email Alarm page
- Figure 3-10: SMTP server settings page
- Figure 3-11: Speaker Alarm Settings page
- Figure 3-12: NAS Storage settings page
- Figure 3-13: Cloud Storage Settings page
- Figure 3-14: Cloud Storage logged in page
- Figure 3-15: SD-Card settings page
- Figure 3-16: SD-Card information page
- Figure 3-17: Led Control settings page
- Figure 3-18: System date/time settings page
- Figure 3-19: Admin settings page
- Figure 3-20: Firmware upgrade settings page
- Figure 3-21: Firmware upgrade status page
- Figure 3-22: System reboot settings page
- Figure 3-23: System reboot under-going page
- Figure 3-24: Stick on the reset button to set to the factory default
- Figure 5-1: The IP camera body
- Figure 5-2: Power extension cable
- Figure 5-3: Anchors and Screws
- Figure 5-4: Power Adaptor
- Figure 5-5: Quick installation guide
- Figure 5-6: ID/Password Card

1. Introduction

The IP Camera is a Full HD (two mega-pixel) camera designed for all day video surveillance on your iPhone/iPad and Android mobiles/pads. The setup is truly 1-2-3 :

1. Connect the camera to the network
2. Download the app mCamView2 into your iPhone/iPad or Android
3. View video by the camera ID/password

The push notification is supported, so that you will get the notification from your iPhone/iPad and Android once there is any events detected through the motion detection or sound detector on the camera, even when your mobile is on sleep mode.

The SD card recording is supported, and you could playback the recorded video on your iPhone/iPad and Android. You could also do the SD card recording only when there is motion or sound detection to save the SD card storage size. The motion and sound detected recording has a 5 seconds pre-recording, so that you will always catch the critical moment.

The Time Lapse Recording is supported. The camera can do time lapse recording on the SD card and you can playback the recorded time lapse video on the mobile or tablet remotely, anywhere. This is more convenient than traditional time lapse camera which can only be played back by removing the SD card to a computer.

The NAS and cloud storage is supported. You can record the video files into any normal NAS devices or to your Dropbox account. And you can playback those recorded video files remotely on your mobile devices or computers.

For day & night usage, there is an IR cut on the camera, IR filter is on for day and off for night. The lens is wide angle up to 140 degree.

Two-way audio is supported. You can monitor the synchronized video/audio and talk to or warn the people around the camera from your iPhone/iPad and Android once you got the push notification. There is a built-in speaker so that you could connect any high power speaker to the camera for your needs.

The WPS(WiFi Protected Setup) is supported. You could set up the WiFi connection of the camera with the router by clicking the WPS button on the camera

Full HD IP Camera

and on the router at the same time. No more complicated WiFi configuration.

The IP camera is ideal for securing small businesses, home offices and residences. The IP Camera is a perfect replacement of the alarm system in your house and shop. .

The differences

It's very easy to see the video of the FHD IP Camera, you only need to key in the ID/Password of the IP CAM any where in the world, you do not need to remember the IP address or domain name or DDNS name or port number. And you do not need to modify the settings(like port mapping, fixed IP, DDNS, virtual server) of the NAT/router devices, it's just a plug & play usage.

The camera could be easily controlled and monitored by the App on iPhone and Android mobiles. This camera could also be used as a time lapse video recording camera at the same time.

2. Hardware description and quick installation/usage

The IP CAM is designed to be very easy to install and use. First, let's see the major components of the IP CAM products.

2.1. Major hardware components.

The major components on the **front panel** of the IP CAM products are the followings :

1. Lens – the focus of the lens is fixed, you do not need to spend time to adjust the focus, the effective focus range is from 50cm to infinity.
2. IR LED – there is an high power IR LED for the night mode usage.
3. Microphone – for receiving the audio/voice. Effective distance is about 5 meters.
4. Status indication LED (red) – this LED is to indicate the Internet connection status. When the Internet connection is connected, the LED will be constant red light. If there is any Internet connection problem, the LED will be blinking red light.
5. WiFi indication LED (blue) – this LED is to indicate if the WiFi link is ok and packet traffic is sending/receiving. When there is packet sending/receiving, the LED is blinking blue light.
6. SD card LED – for the indication of the SD card activity(recording).
7. Micro-SD card slot – for inserting the micro SD-Card. (support up to 32G bytes)
8. WPS button – for the setup of the WiFi connection with WPS function.
9. Reset button – this is the button to reset the IP CAM to default factory settings. You need to use a small stick like pencil or tooth stick to press the reset button for more than 3 seconds to enable the reset function. Usually when you forgot the administrator account, you will probably need to do this reset action to reset to the default factory settings. Please refer to section 3.19 for more details.
10. Light detector – for switching between day time and night time automatically.

Full HD IP Camera

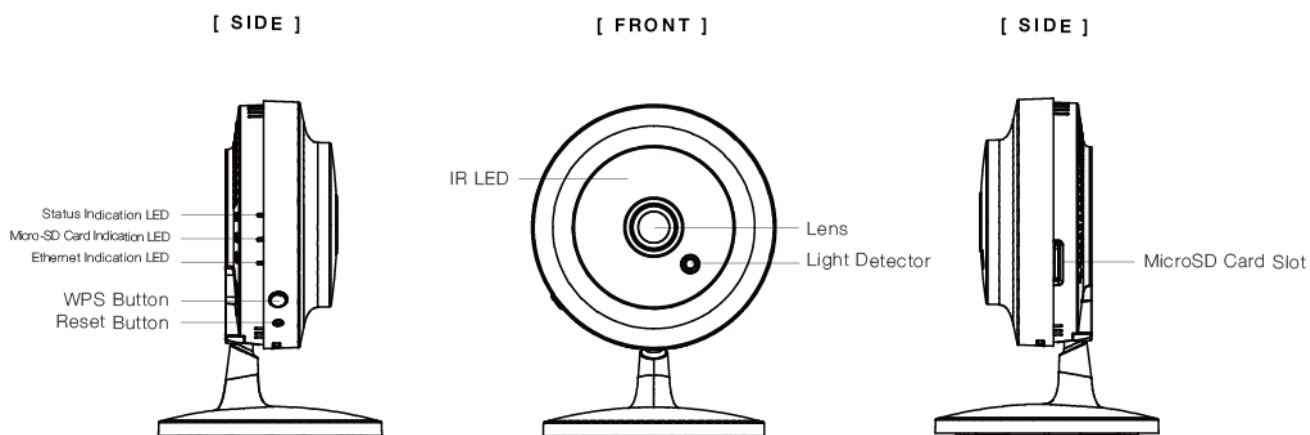


Figure 2-1: Major components in the front panel

The major components on the **back panel** and bottom of the IP CAM products are the followings:

1. Coin Slot – this is to tighten or loose the base plate of the bracket..
2. Bracket screw holes – this is the position to screw in the screws on the wall or ceiling.
3. Internal speaker – there is an internal speaker inside.
4. Power jack – this is the place to plug in the power adaptor. The power needed for this IP CAM is 12V/1.0A, please make sure you are using the correct power adaptor.

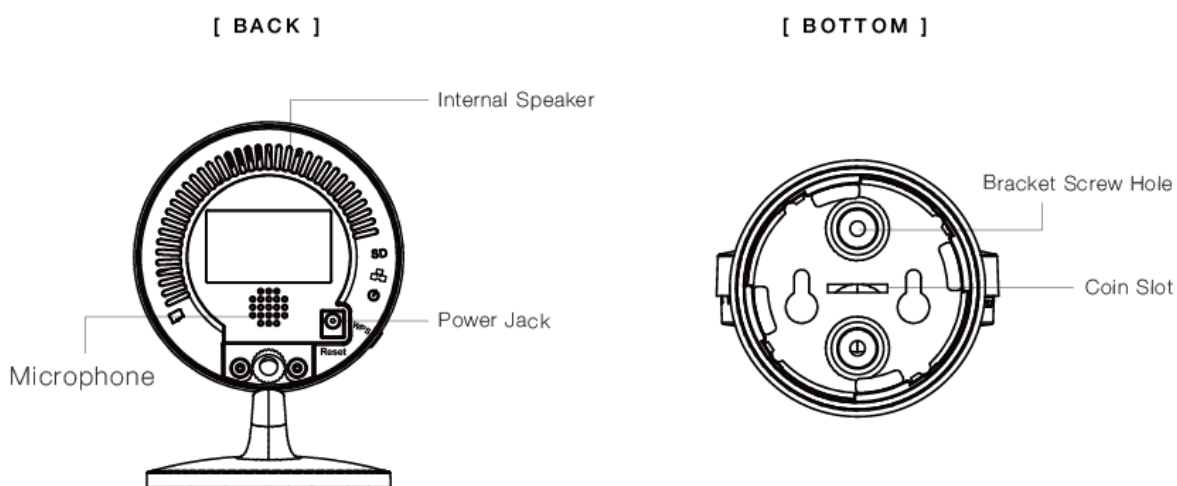


Figure 2-2: Major components in the back panel

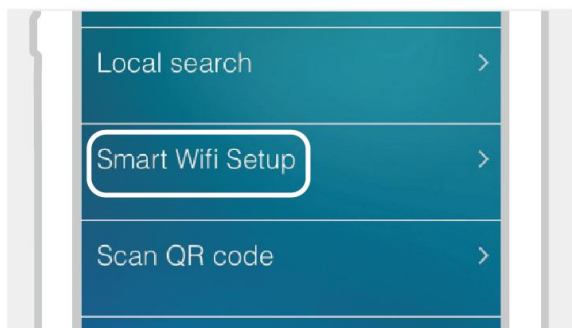
2.2. Quick installation and usage

The only thing need to do to see the video of the camera is to setup the WiFi connection. Please follow the steps below to setup the WiFi connection :

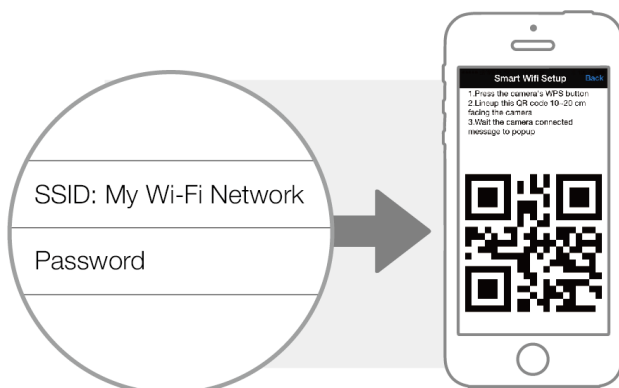
- a. Make sure your iPhone/Android mobile is connected to a 2.4G Hz WiFi router, this is the must.



- b. Open the App mCamView2, tap the “+” icon to add the camera, choose “Smart WiFi setup” to setup the camera with WiFi connection.

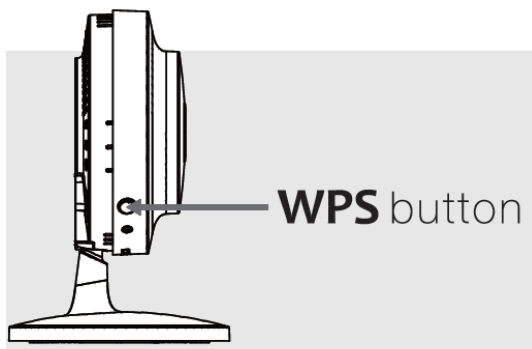


- c. Follow the steps and enter the WiFi password to generate a QR code.

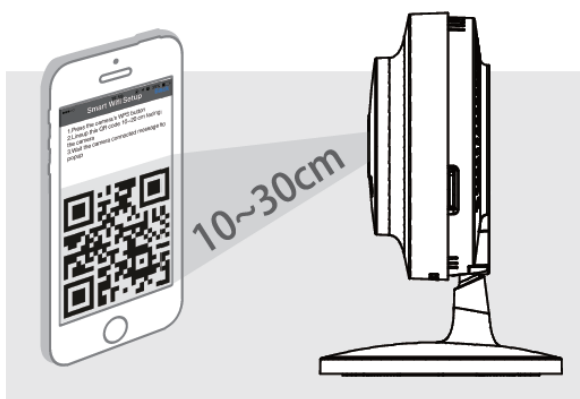


Full HD IP Camera

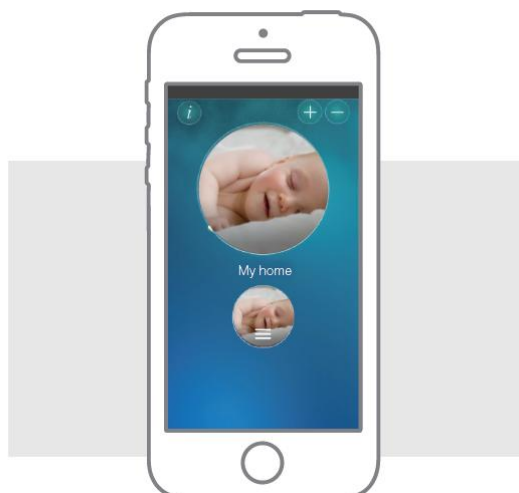
- d. Press the WPS Button on the Camera. The three LEDs will start flashing.



- e. Place your mobile about 10-30cm away from the camera.



- f. The camera will beep when the QR code is successfully scanned. The three LEDs will start chasing and the camera will start the WiFi connection.
- g. When the WiFi connection is established, the blue LED will be flashing and the red LED will remain on. The new icon for this camera will be created on the App. Just click the icon to see the video.



2.3. Manage the camera on the computer

Please download the latest CamView software with the following information :

Website: <http://www.starvedia.com/download.html>

Username: viewer Password: camview

(must be running Microsoft Windows OS).

Execute the downloaded program CamViewInstaller-xxx.exe. The program will pop-up some windows about the installation options, please press the “next” button to proceed with the installation. After the installation is complete, there will be a CamView icon on the desktop of your computer screen, please execute this icon. The CamView program will run immediately.

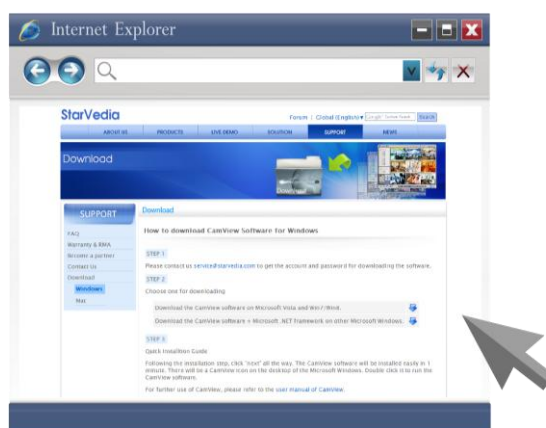


Figure 2-3: Download the latest CamView software

Figure 2-3 is the running window of the CamView program. If the computer and IP CAM is connected to the same network, the IP CAM ID will be displayed in the “Auto Search” list. You can double click the “Auto Search” to search all the connected IP CAMs any time. The only thing left right now for seeing the video is to double click the IP CAM ID item in the “Auto Search” list. For example, if the IP CAM ID is 001-001-029, you can then double click the 001001029 item in the “Auto Search” list to view the video. A window asking for password input will pop up. Please key-in the password in your ID/Password card into this field and click “ok”. The video will then be displayed on the window.



Figure 2-4: The ID/Password card

Notice 1:

1. You can modify this play-video password by entering into the web configuration pages. Please refer to section 3.6 for more information. Or by using the App mCamView2 under the “admin” settings.
2. You can also add the IP CAM into the CameraList in the CamView software to have more convenient video display, please refer to the user manual of the CamView software for more functions.

Notice 2:

1. For the iPhone usage, please download “mcamview2” from App Store
2. For the iPad usage, please download “mcamviewHD” from App Store
3. For the Android mobile phone/pad usage, please download “mcamview2” from Android Market.

Seeing the video in a remote location

After the IP CAM is installed and you can see the video from the CamView software in the local network, it's very easy to see the video in a remote location. All you need to do is add a camera item in the “CameraList” folder of the CamView software, key in the IP CAM ID and Password(from the ID/Password card). And then double click this camera item. You will then see the Camera video immediately. No further NAT/router setting modifications are needed.

Full HD IP Camera

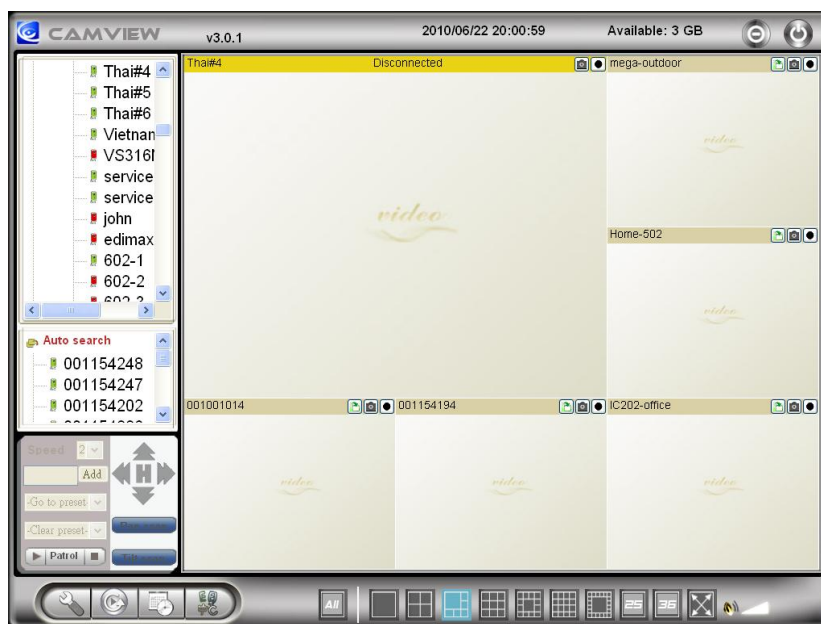


Figure 2-5: Running window of CamView program

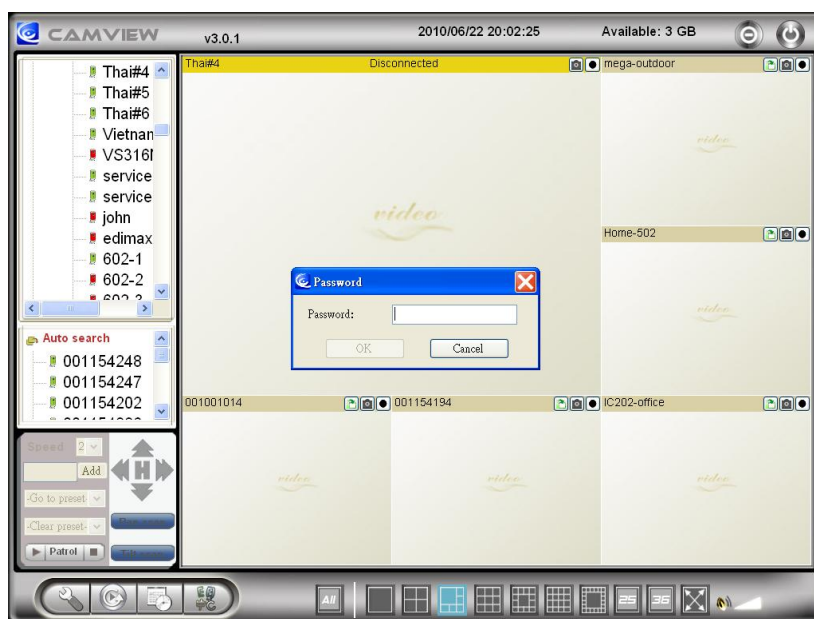


Figure 2-6: Pop-up play-video password window

2.4. Push notification

The IP CAM supports push notification when using the iPhone/iPad or Android devices. So that when there is alarm motion detection or sound detection, your mobile device will receive alarm notification. You can immediately playback the recorded video(if SD card inserted) or do a live view.

Full HD IP Camera

Please download the “mcamview2” app from App Store for iPhone.

Please download the “mcamviewHD” app from App Store for iPad.

Please download the “mcamview2” app from Android Market for Android devices

To enable the push notification, go to the settings page of the specific camera, choose “alarm notification”, key in the login account(default is “admin”, no password), and enable the alarm condition(motion detection or sound detection) you want. That’s all.

The mobile device will receive push notification immediately when the alarm is triggered. If the SD card is inserted, the camera will start SD card recording when the alarm condition is detected. And the recording will include 5 seconds of pre-recording.

2.5. Time lapse video recording

Please use the App mCamView2 to setup the time lapse video recording and playback the recorded time lapse video. For more details, please refer to the user manual of the App.

3. Web configurations

You can login into the web configuration page by directly key-in the IP address of the IP CAM or right-click the searched IP CAM in the “Auto Search” list of the CamView software and click the “Web Configure” to open the login window of the IP CAM.

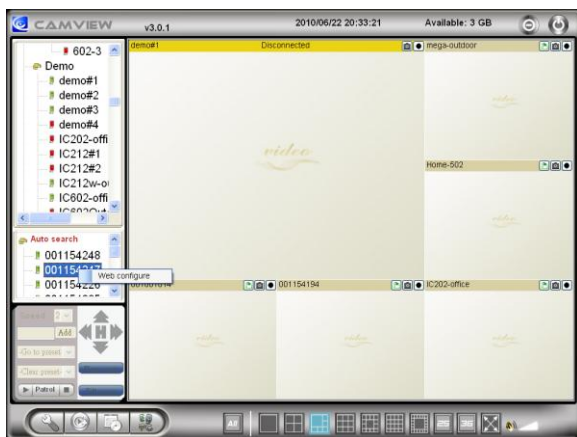


Figure 3-1: Open the web configuration page from CamView software

The default login account is “admin”, leave the Password field empty.

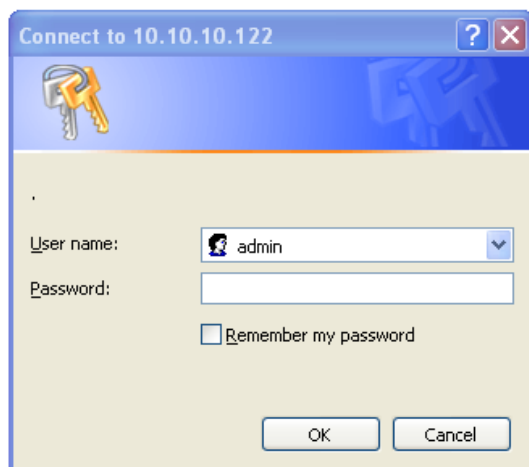


Figure 3-2: IP CAM Web configuration login page

3.1. Information

The first page of the web configuration of the IP CAM is the information page. You can see the model name/firmware version, IP CAM ID, registration status, network type and current video settings(bandwidth, resolution) in this page.

The IP CAM can be viewed remotely by the CamView software only when the IP CAM is registered. If this IP CAM is not registered, please check the WiFi connection. The “Network type” field displays the network connection and method(DHCP or static ip) the IP CAM is running. The “Video users” field displays the number of connected video viewing users.

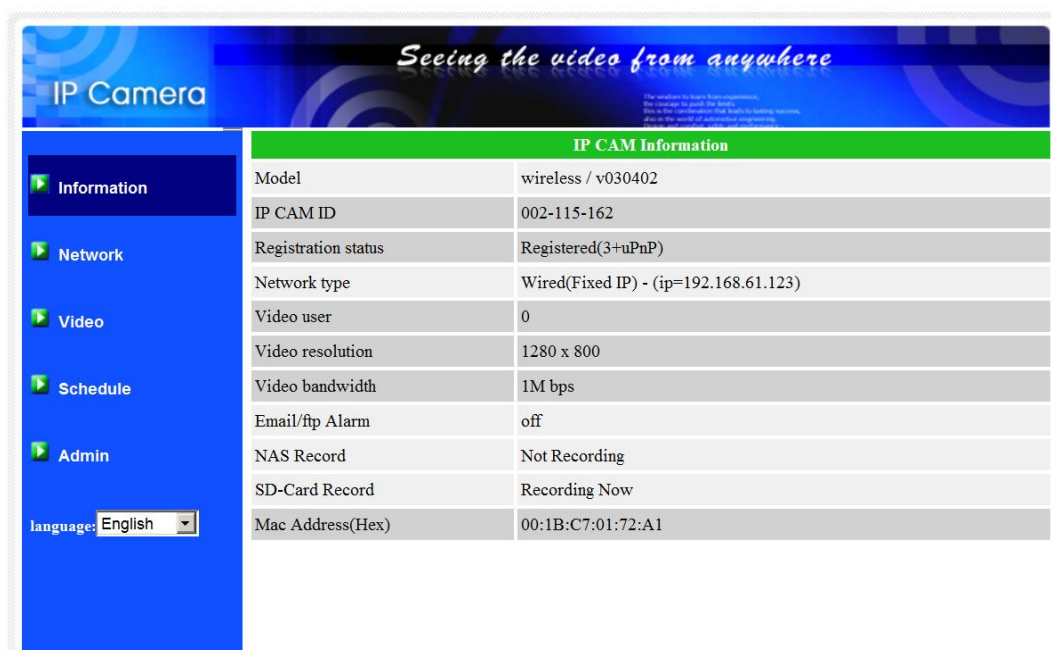


Figure 3-3: IP CAM Information page

3.2. WiFi security

The camera only supports wireless connection to a wireless router. Please refer to section 2.2 to set the WiFi settings of the camera. After the camera is connected to a WiFi router, you could browse the following page..

The fields on the web settings are explained below :

1. SSID – this is the ID of the wireless router or AP of your wireless network environment, must be set correctly.
2. Security mode – this is the security mode used in the wireless router or AP. Need to choose one of the three modes – None, WEP and WPA-PSK.
WEP : Wireless Encryption Protocol.
WPA : WiFi Protected Access.
PSK : Pre-Shared Key.
TKIP : Temporal Key Integrity Protocol.
AES : Advanced Encryption Standard.
3. WEP mode – when the WEP mode is chosen, you need also choose between 64-bit(5 char), 64-bit(10 hex), 128-bit(13 char) and 128-bit(26 hex) encryption mode, and then fill the WEP key correctly.
4. WPA-PSK mode - when the WPA-PSK mode is chosen, you need also choose between TKIP and AES encryption mode, and then fill the WPA-PSK key correctly. WPA2-PSK is also supported. But WPA Enterprise or WPA2 Enterprise is not supported.

All the fields in this page must be filled correctly with the same settings the wireless router or AP using.

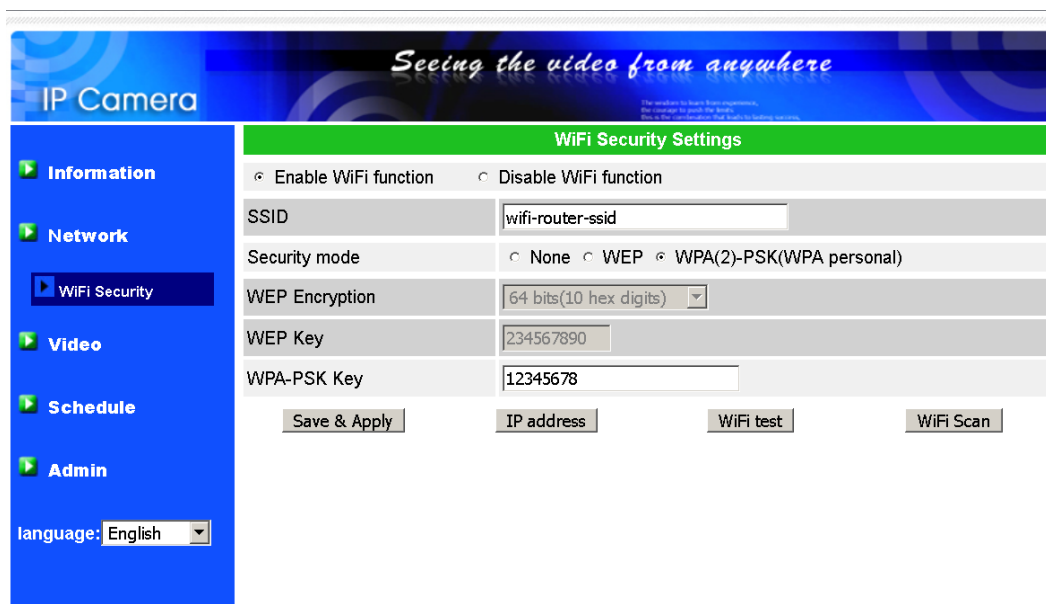


Figure 3-4: WiFi security enabled page

Full HD IP Camera

You can click the “WiFi scan” button to scan for all the available access points nearby.

If you want to define fixed IP address when using WiFi connection, please press the “IP address” button and key in your preferred IP address.

3.3. Video Settings

The IP CAM is designed to provide high quality video for viewing from CamView software. In this page, you can modify some settings related to the video viewing:

1. Password(play video) – this is the password needed for viewing the video from the CamView software. Together with the IP CAM ID, you can view the video of this IP CAM anywhere in the world through the Internet.
2. Internet speed – this is the Internet bandwidth of your network environment. Higher value will generate higher video quality. But if your internet connection can not provide more bandwidth than the specified value, the video quality could degrade. So, please key in a value that is lower than your internet bandwidth.
3. Select resolution & frame rate automatically – you can let the system select the suitable video resolution and frame rate automatically for you. The selection is based on the “Internet speed” value. This is the recommended default setting.
4. Resolution – there are three choices : 640x360, 1280x720 and 1920x1080. If you decided to choose the value manually, you can choose one of the four values. But, please be noticed that if the Internet speed is slow(low value), high resolution(1920x1080) or frame rate could cause very bad video quality.
5. Frame rate – the video frame display rate. Higher value means faster movement and continuity in the video display.
6. Favor/Preference – choose between “Video motion”, “Image quality”, “better quality” and “best quality”. When the real bandwidth is not enough for the selected “Internet speed”, the system will need to degrade the video motion or image quality. This selection will decide if the user want to maintain the “video motion” or “image quality” when the internet speed is not good enough.
7. Brightness – the brightness of the video, lower value means darker display.
8. Sharpness – the sharpness of the video, higher value means sharper video.
9. Low light sensitivity – The low light sensitivity could be normal, high or very high. When the low light sensitivity is high, the system could see better video clearance under low light situation, but the moving object will not be very clear under this low light environment. Under very dark environment, set to “very high” will get better video clearance. The default value of this setting is “high”.
10. Video color – choose between “colored” and “black&white”.
11. Video flip – can do “normal” or “flip” video display, this is needed if the ip camera is hung on the ceiling or wall.
12. Outdoor/Indoor video – for better video display quality, modify this setting when taking indoor or outdoor video. The default setting is “Outdoor video”, in most cases, this is also ok for indoor usage. Under some special cases, there could be some strip lines on the video display when the IP camera is taking indoor video. In

Full HD IP Camera

this situation, change the setting to “Indoor video” will solve the problem. Please also be noticed that in “Indoor video” setting, the video display of outdoor view is very vague. For indoor usage, if there is strong sun light into the room, please select the “Indoor+sun light” choice.

13. Enable/disable audio microphone – you can enable or disable the audio microphone on the IP CAM. If disable, there will be no voice on the CamView video viewing.
14. Enable/disable time display on video – if enabled, the date/time of the system will be displayed on the left-upper corner of the video.

When this modification is “Save&Apply”ed, it works immediately, but all the connected video viewing users will be disconnected.

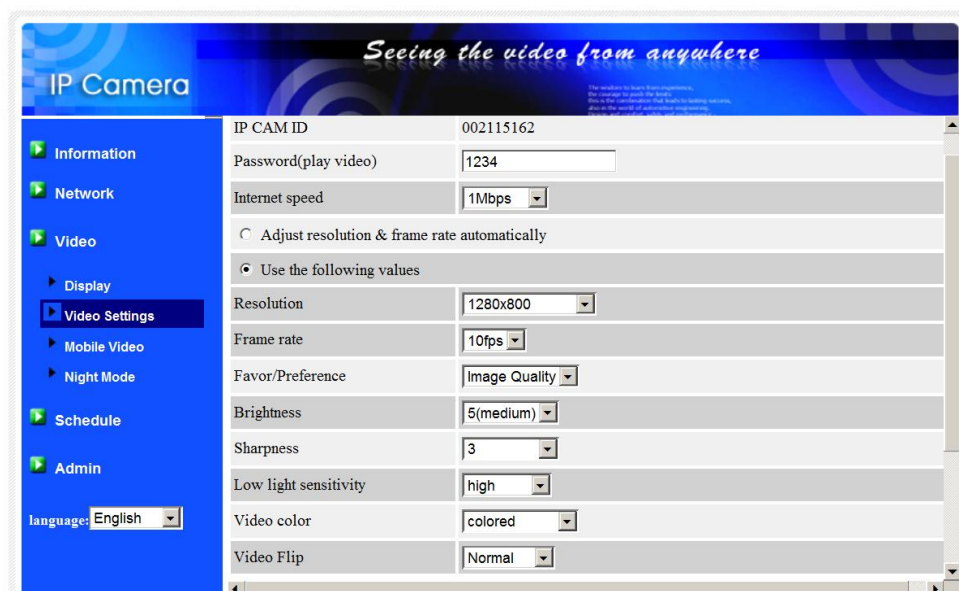


Figure 3-5: Video settings page

3.4. Mobile Video settings

The IP CAM is able to be viewed from a 3G mobile phone, please download “mcamview2” software from App Store for iPhone/iPad and “mcamview2” from Android Market for Android Mobiles and pads..

The video frame rate, resolution and bandwidth for 3G mobile access could be set independently from the video settings for CamView(PC) access. The maximum allowed resolution is 1280x720 and maximum allowed bandwidth is 2M bps.

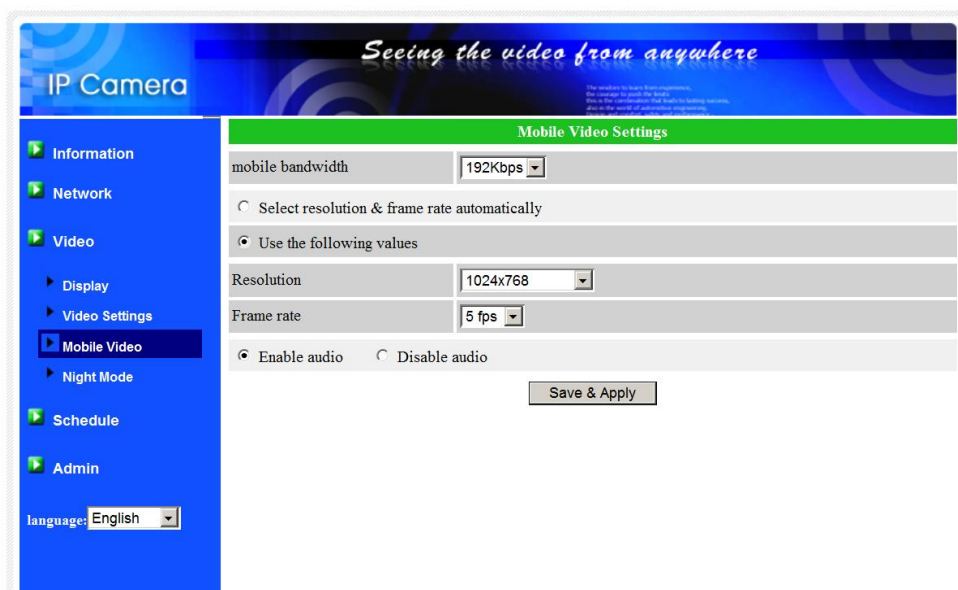


Figure 3-6: Mobile video settings page

3.5. Night mode control

The IP Cam is able to work both in day time and night time. There is an IR LED that can let the IP camera see the objects in the night time. This night mode control page is to control when the time the IR LED will be on. There are three ways to control the night mode(IR LED) :

1. Automatic day and night mode switch : the IP cam will automatically turn on the IR LED when the night time is arrived or the environment is becoming dark. There is a light sensor on the IP cam that is doing this light detection.
2. Scheduled time of night mode : the IP Cam can also be scheduled to turn on the IR LED in a time range of each day.
3. Manual night mode control : the IP Cam can be manually forced to night mode(IR LED on) or day mode(IR LED off).

In order to get better video color display during day time and night time, an IR cut filter is used to switch between day and night mode separately. This make sure the video color quality is excellent compared to other IP camera.

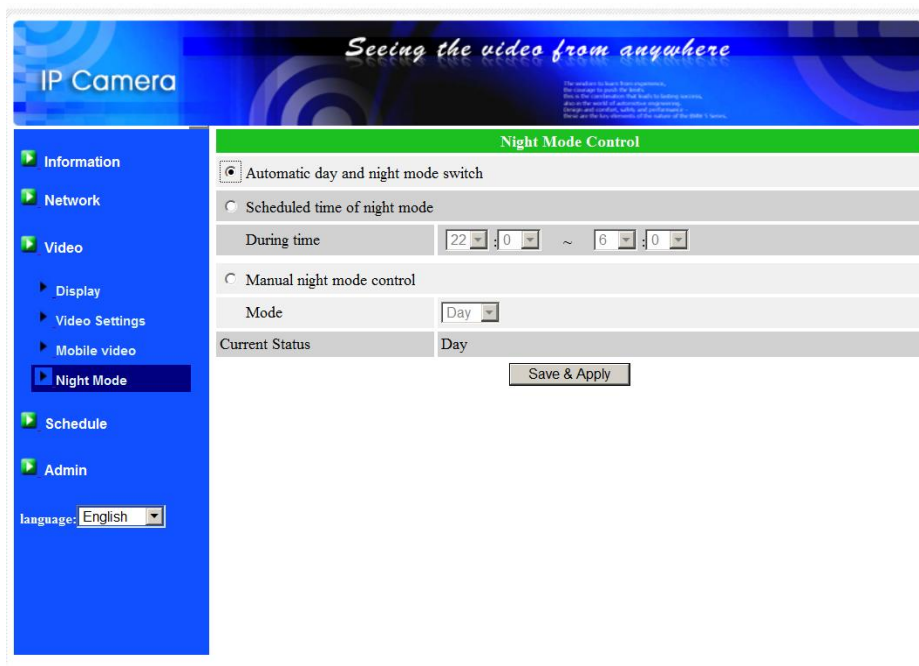


Figure 3-7: Night mode control page.

3.6. Email/ftp alarm

The IP Camera provides the Email/ftp function, you can enable or schedule the Email/ftp ability in this page, the IP Camera will then send out an email with a jpeg picture attached in the email and/or send out the jpeg picture file to a ftp server. The related settings are explained below:

1. Email/FTP trigger – choose between “motion”, “schedule” and “disable”
 - A. If “motion” is selected, it means that when there is a motion detected, the system will send out the email and/or ftp with the captured video snapshot.
 - B. If “schedule” is selected, it means that the email/ftp alarm detection and triggering will be scheduled by the “scheduling” in section 3.12.
 - C. “disable” will disable the email/ftp alarm.

2. Motion sensitivity – there are 10 possible choices in this field.

“High” means high sensitivity, i.e., the motion detection is triggered by a very small movement in the video image. If “High” is selected and the size of the moving object is larger than about 1% of the whole video area, it is detected. Please be noticed that the real size of the object could be large or small, anyway, the detection is only based on the relative size of the object. Probably a small pencil moving near the IP Camera could be detected, but a moving car far away from the IP Camera could not be detected.

“Low” means low sensitivity, i.e., the motion detection is triggered by a very large movement. If the size of the moving object is larger than about 10% of the whole video area, it is detected. “Median” means 3% to trigger the detection.

3. Trigger Interval – this is to control the time interval of consecutive triggering of sending the email/ftp alarm. For example, if this value is set to 10 seconds, it means that the system will wait at least 10 seconds for sending next email/ftp alarm.

4. Send email message – if this item is enabled, the IP Camera will send out an email message with the jpeg picture attached to the specified email account.

5. Email recipient#1~#3 – this is the email address to receive the detection notice message. An email message with the jpeg picture file named by the date/time of the triggered moment will reach this address.

6. Send FTP message – if this item is enabled, the IP Camera will send out a jpeg picture file to the specified ftp account.

7. FTP server – this is the FTP server address to receive the jpeg file.

8. FTP username/password – this is the username/password to login into the FTP server, so, this triggered jpeg file will be allowed to reach this FTP server.

9. Remote folder – the jpeg file will be put under this folder of the FTP server.

Full HD IP Camera

When this modification is “Save&Apply”ed, it works immediately, but all the connected video viewing users will be disconnected.

The default setting is “Disable”.

The screenshot shows the 'Email/FTP Alarm Settings' page of an IP camera web interface. The interface has a blue sidebar on the left with a tree view of settings: Information, Network, Video, Schedule, Email/ftp Alarm (selected), Speaker Alarm, NAS Settings, SD-Card, Temperature, Scheduling, and Admin. At the bottom of the sidebar is a language dropdown set to 'English'. The main content area has a green header 'Email/FTP Alarm Settings'. Below the header are several settings: 'Email/FTP Trigger' with radio buttons for Motion (selected), PIR, Schedule, and Disable; 'Motion sensitivity' with a dropdown menu set to 3; 'Trigger Interval' with a text input set to 10 and the unit 'seconds(1~600)'; a checked checkbox for 'Send Email message'; three text input fields for 'Email recipient#1' (containing 'xxx@yyy.com'), 'Email recipient#2', and 'Email recipient#3'; an unchecked checkbox for 'Send FTP message'; and three text input fields for 'FTP Server', 'Username', and 'Password'.

Figure 3-8: Email/ftp Alarm page

For the email message to work, a SMTP server is required. Click the “advanced” button will display the SMTP server settings page. A default SMTP server is provided, so that the user does not need to use a specific SMTP server. But, any way, the user could also specify his own SMTP server. (SSL security is not supported)

1. SMTP server – this is the SMTP server that will help to transfer the email message. This server is irrelevant to the “Email recipient” address.
2. SMTP username/password – this is the account to use the SMTP server to transfer the email message. The SMTP server and username/password account are only for transfer the email message to the “Email recipient”, the “Email recipient” could be on another email server or any reachable email address. The username and password fields could be left empty if no authentication is needed for the SMTP server.
3. SMTP server test – after the settings are filled, you could press “SMTP server test” to check if all the settings are correct. If the default SMTP server is choosed, it will test the default SMTP server.

Full HD IP Camera

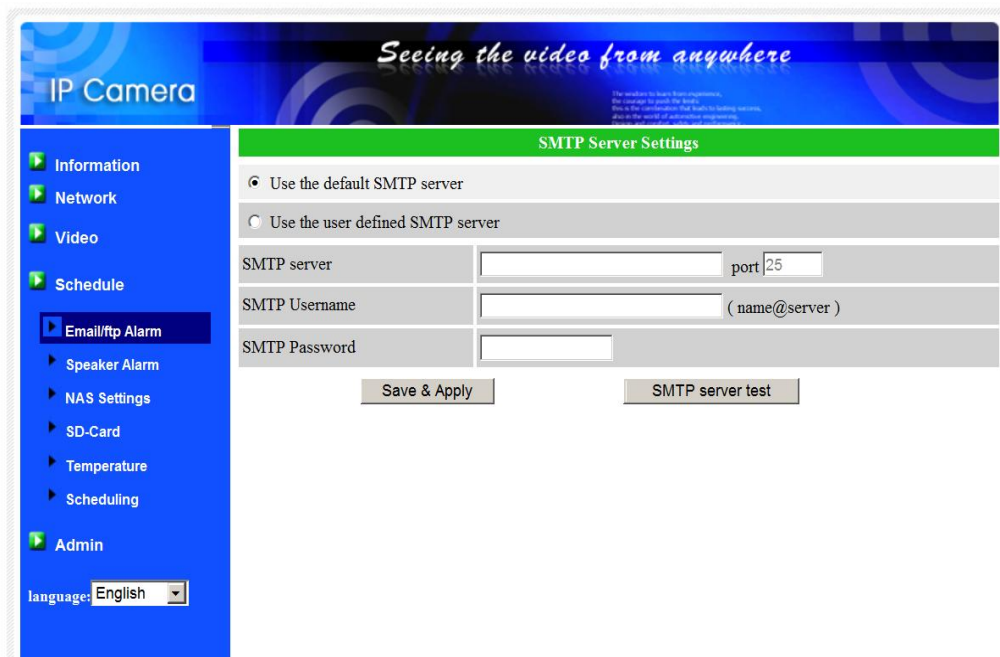


Figure 3-9: SMTP server settings page

3.7. Speaker Alarm settings

The IP Camera provides speaker alarm function, please use the mcamview2 to set the scene to trigger the speaker alarm. The duration of the alarm could also be set. The related settings are explained below:

1. Alarm loop times – this is the number of the loop times of the speaker alarm.
2. Alarm audio – you can use the default audio as the alarm audio or use your recorded audio as the alarm audio. Just click the “Start Audio Record” to start recording your own alarm audio. The maximum allowed record audio is 30 seconds.

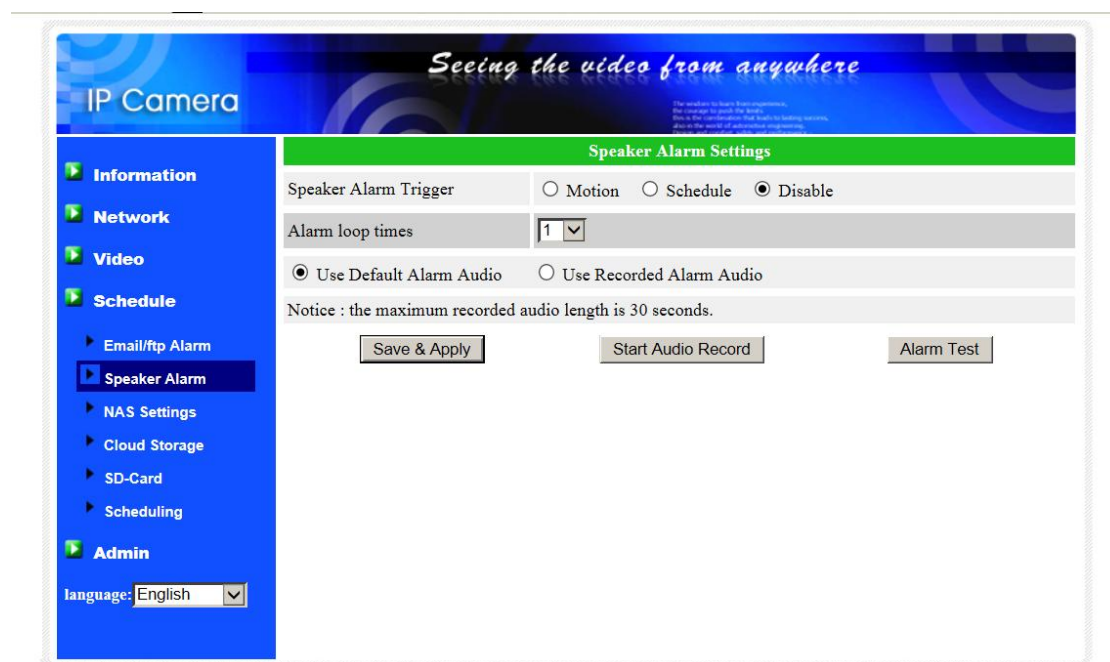


Figure 3-10: Speaker Alarm Settings page

3.8. NAS settings

The IP Camera provides the recording of the video files into a standard NAS (Network Access Storage) device. The IP camera connects to the NAS device using the standard LMX_NS/CIFS/SSN protocols that are the same as the Microsoft Windows network neighborhood protocols. This makes the IP camera easily record the video files to all the standard NAS devices in the market. Since there are a lot of different choices, including prices and scales, users can decide by themselves which is best for their needs. By using this function, the standard NAS device is becoming a NVR (Network Video Recorder) device.

Notice : the IP camera can only do NAS recording or Cloud recording at the same time. NAS recording and cloud recording can not be enabled at the same time.

1. If the “Always Recording” is selected, the system will start to record to the NAS storage device immediately and keep recording always. If the “Scene Recording” is selected, the system will do the NAS recording according to the “scene” settings in mcamview2. “Disable Recording” will disable this NAS recording.
2. When doing the NAS recording, the system will check the free disk space of the NAS device. If the free disk space is less than the specified number, the system will do “Circular recording”(overwrite the oldest recorded files of this IP camera in the NAS device) or “Stop recording” as selected. If the “keep recorded video for xx days” is selected, the system will do circular recording and over write the recorded video files older than xx days ago.
3. The IP camera can connect to the NAS device by using the “NAS IP address”. If the NAS device uses a fixed IP address(either in the local area network or in the public internet), the IP camera can connect to it by the “NAS IP address”.
4. The “Shared folder name” is the folder in the NAS device that will record the video files of the IP camera.
5. The “NAS access account” and “NAS access password” are the username and password to login into the specified “Shared folder name” of the NAS device.
6. NAS Info – display the NAS storage capacity and available disk space.
7. Configure NAS(web) – click this to connect to the web configuration page of the NAS device. Need to key in the login username/password of the NAS device.

In the Microsoft Windows environment, you can access to the NAS device by keying the URL address [\\”NAS name”\shared folder name](#) or [\\”NAS IP address”\shared folder name](#) in the windows Internet Explorer, and then key in the “NAS access account” and “NAS access password” to the prompted login window. The video files are recorded under the subfolder IPCamRecordFiles/Recording/ID-ID,

Full HD IP Camera

where ID is the ID of this IP camera. All the recorded files are with the name of hhmmss.crf format, where hh is the hour, mm is the minute, ss is the second of the starting time of the recording video. The files are segmented every five minutes. Users can use the free bundled CamPlay software to play back the video files.

The screenshot shows the 'NAS Storage Settings' page of an IP camera web interface. The page has a blue header with the text 'IP Camera' and 'Seeing the video from anywhere'. A left-hand navigation menu is visible, with 'NAS Settings' selected. The main content area is titled 'NAS Storage Settings' and contains the following configuration options:

- Recording mode: Always Recording, Schedule Recording, Disable Recording
- Retention: Keep recorded video for 7 days (Circular recording)
- Trigger: If free disk less than 0 GB
- Recording type: Circular recording, Stop recording
- Use NAS IP address: 192 . 168 . 61 . 1
- Shared folder name: public
- NAS access account: guest
- NAS access password: (empty field)
- Links: [Configure NAS\(Web\)](#), [Access NAS Files](#)
- Buttons: Save & Apply, NAS Scan, NAS Info

Figure 3-11: NAS Storage Settings page

3.9. Cloud Storage Settings

The IP camera provides the recording of the video files into the Dropbox as the cloud storage. You can use your Dropbox account to do the recording and remotely playback the recorded video files on your mobile devices or computers.

1. If the “Always Recording” is selected, the system will start to record to the cloud storage device immediately and keep recording always. If the “Schedule Recording” is selected, the system will do the cloud recording according to the “scheduling” in section 3.14. “Disable Recording” will disable this cloud recording.
2. When doing the cloud recording, the system will check the free disk space of the cloud device. If the free disk space is less than the specified number, the system will do “Circular recording”(overwrite the oldest recorded files in the cloud device) or “Stop recording” as selected. If the “keep recorded video for xx days” is selected, the system will do circular recording and over write the recorded video files older than xx days ago.

Notice : the IP camera can only do NAS recording or Cloud recording at the same time. NAS recording and cloud recording can not be enabled at the same time.

请使用

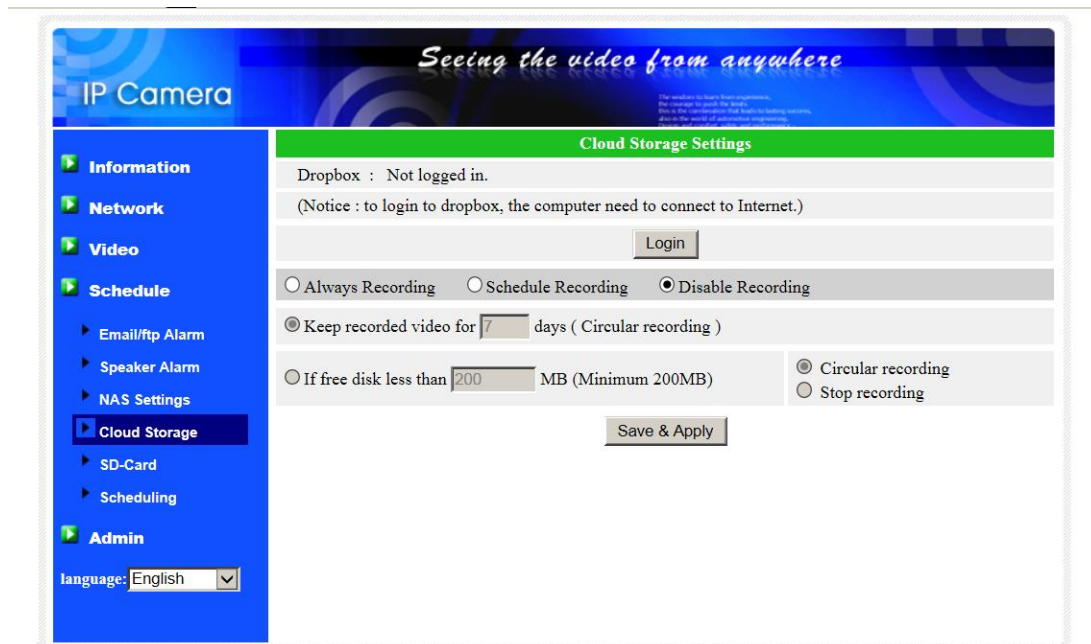


Figure 3-12: Cloud Storage Settings page

Full HD IP Camera

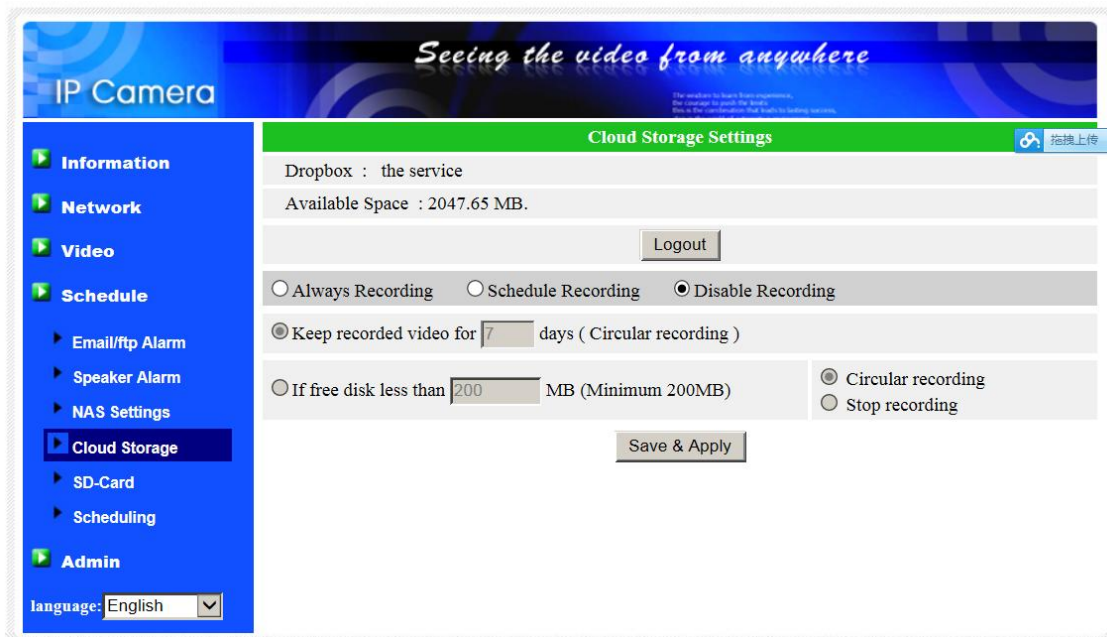


Figure 3-13: Cloud Storage logged in page

3.10. SD-Card settings

The IP camera provides the recording of the video files into a standard Micro SD-Card. Since this recording is directly to the SD-Card, there is no network packets loss problem when recording to remote device through internet.

Notice : The resolution and frame rate of the recorded video is the same as that set for the video settings.

1. If the “Always Recording” is selected, the system will start to record to the SD-Card immediately and keep recording always. If the “Schedule Recording” is selected, the system will do the SD-Card recording according to the “scheduling” in section 3.12. “Disable Recording” will disable this SD-Card recording.
2. When doing the SD-Card recording, the system will check the free disk space of the SD-Card. If the disk space is full (no free disk space), the system will do “Circular recording”(overwrite the oldest recorded files in the SD-Card) or “Stop recording” as selected.
3. SD-Card status – the SD-Card inserted or removed status is displayed here.
4. SD-Card files – as shown in fig.3-14, all the recorded video files with information including file name and recorded time are listed in this page under the directory of each date. The recorded file could be separately downloaded or deleted on this page.
5. Format SD Card – this is to format the SD card, all data on the SD card will be erased.

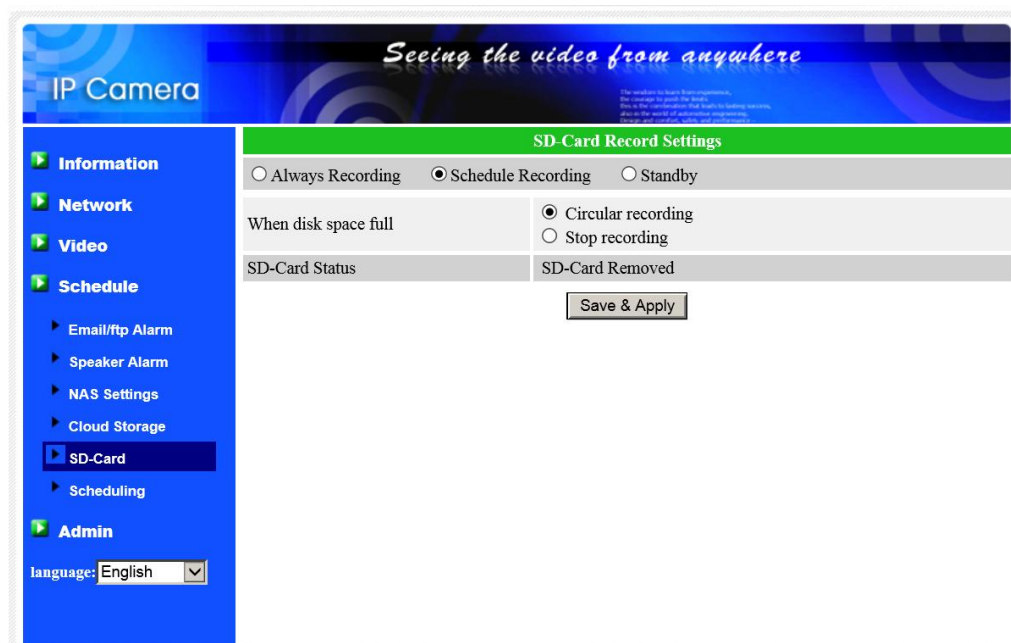


Figure 3-14: SD-Card Settings page

Full HD IP Camera

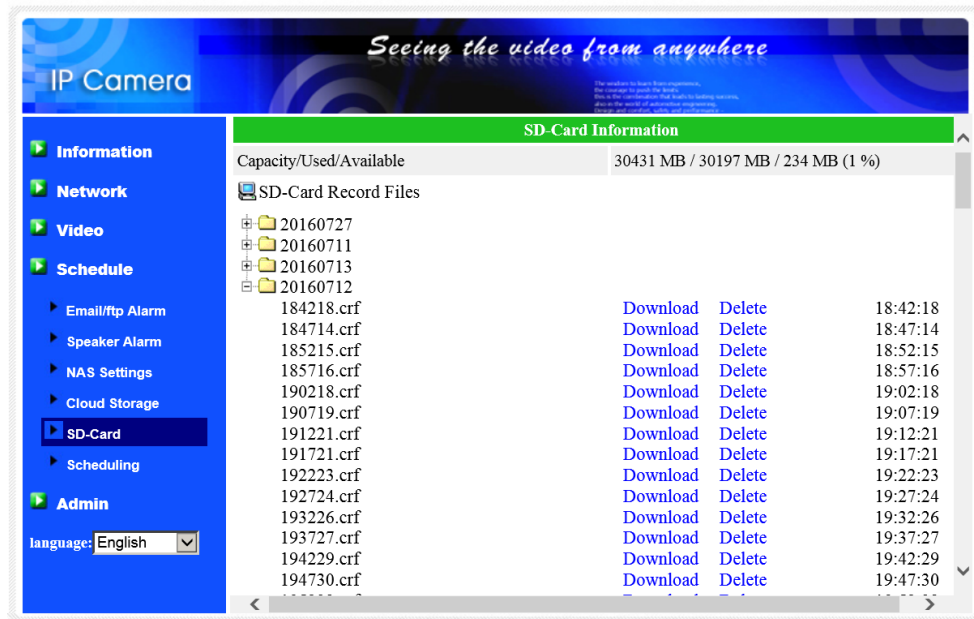


Figure 3-15: SD-Card information page

3.11. Scheduling

The IP camera provides the scheduling function for the motion detection triggered email/ftp sending and/or the NAS recording with the individual parameters set in the . “Email/ftp alarm” settings and the “NAS settings” page. Totally 12 schedule list items are allowed. There is no conflict check for the scheduling, it means that the scheduling time could be overlapped, and the IP camera will do all the scheduled events during the overlapped time period. For the scheduling of the Email/ftp sending and/or NAS recording, the “Schedule” option must enabled in the “Email/ftp alarm” settings and/or the “NAS settings”.

1. Schedule list – all the scheduling are listed in this area. Each listed item can be modified or deleted by pressing the “Edit” or “Delete” button.
2. Email/ftp Alarm – for each scheduling, if this is selected and the “Motion triggered” is enabled, the IP camera will trigger the email/ftp sending in the scheduled time period when the video motion is detected.
3. Speaker Alarm – for each scheduling, if this is selected and the “Motion triggered” is enabled, the IP camera will trigger the speaker alarm in the scheduled time period when the video motion is detected.
4. NAS/cloud Record – for each scheduling, if this is selected, either “Continuous” or “Motion triggered” could be enabled. For “Continuous”, it means that the IP camera will do the video recording to the NAS/cloud device during the whole scheduled period. For “Motion triggered”, it means that the IP camera will do the video recording to the NAS/cloud device for 30 seconds during the scheduled period each time when the video motion is detected. There is a five seconds pre-recording of the triggered recording to keep the critical moment recorded.
5. SD-Card Record – for each scheduling, if this is selected, either “Continuous” or “Motion triggered” could be enabled. For “Continuous”, it means that the IP camera will do the video recording to the SD-Card during the whole scheduled period. For “Motion triggered”, it means that the IP camera will do the video recording to the SD-Card for 30 seconds during the scheduled period each time when the video motion is detected. There is a five seconds pre-recording of the triggered recording to keep the critical moment recorded.
6. For the scheduling period, can choose between “Every week”, “Every day” or “Fixed time” :
 - A. For “Every week”, can choose week days of the week and set the time duration of each day.
 - B. For “Every day”, can set the time duration of every day for the scheduling.
 - C. For “Fixed time”, can set the starting date/time and the end date/time of the

Full HD IP Camera

scheduling period.

IP Camera *Seeing the video from anywhere*

The website is built using ASP.NET, the content is based on PHP built on Apache, and the server is running on Windows.

Schedule Management

Schedule list	S Every day	00:00 - 24:00	Edit	Delete
	S 2014/05/21 12:00 - 2014/05/31 12:00		Edit	Delete

Email/ftp Alarm Email/ftp schedule not enabled

Speaker Alarm Motion triggered

NAS/Cloud Record Continuous Motion triggered

SD-Card Record Continuous Motion triggered

Every week Sun Mon Tue Wed Thu Fri Sat

Every day During time 12 : 00 ~ 12 : 00

Fixed time Start time : 2014 / 05 / 21 12 : 00

End time : 2014 / 05 / 31 12 : 00

Figure 3-16: Schedule management page

3.12. Led Display Control

The IP CAM provides the Led Display Control function, you can enable or disable the led display/indication on the front panel of the IP cam device. The related settings are explained below:

1. Normal led display – select this to enable the status led and WiFi led display.
2. Turn off led display always – select this to disable the status led and WiFi led display.
3. Turn off led display after network connected – select this then the led will display when the Internet connection has some problem, the led display will be off when the Internet connection is successful.

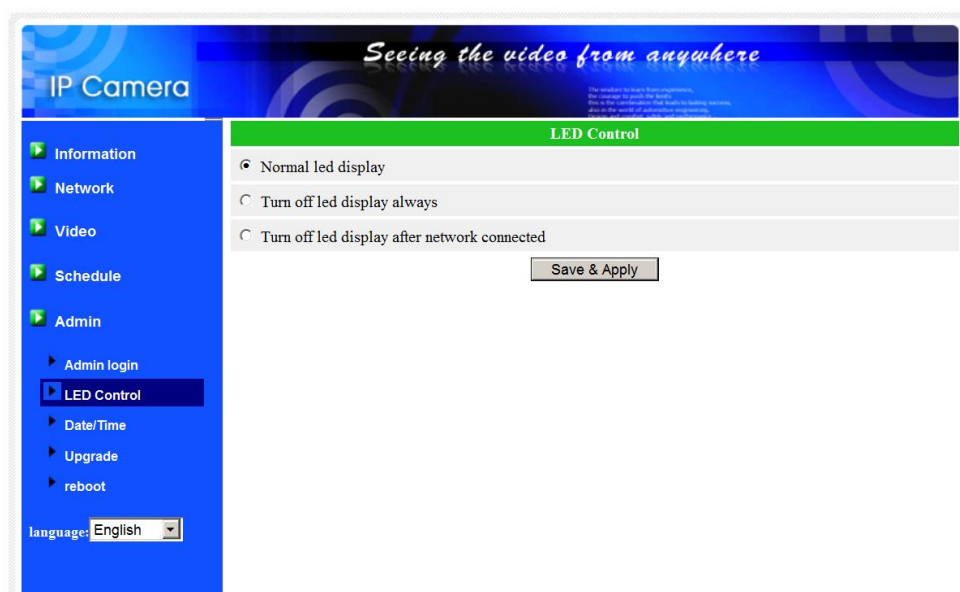


Figure 3-17: Led Control settings page

3.13. Date/Time

The IP CAM can synchronize the date/time with the universally available time server(for example stdtime.gov.tw) through NTP protocol. The date/time will then be corrected with the time server anytime when the Internet is connected.

Users can choose the different TimeZone of their areas to display the correct time. For some TimeZone areas, the “Daylight Saving Time” could be enabled or disabled. When the “Daylight Saving Time” is enabled, the start and stop time of the Daylight Saving Time could be edited.

The camera has an internal real time clock that can maintain the date/time even when the camera is not connected to internet.

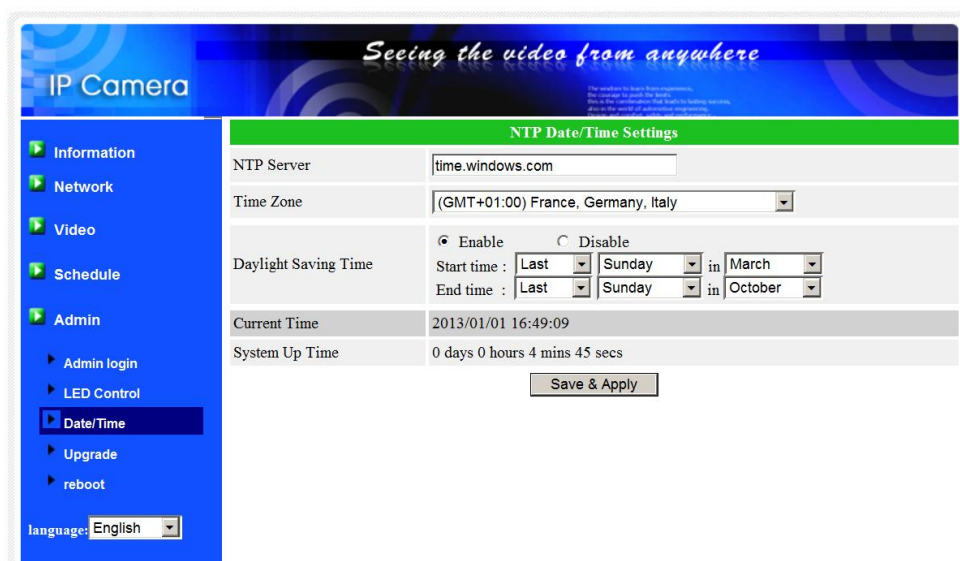


Figure 3-18: System date/time settings page

3.14. Admin

In this page, you can modify the web login account. With this account, you can login to the IP CAM and do any modifications. The default account is “admin” without password. If the login account is forgotten, you can reset the IP CAM to the factory default settings by following the steps in section 3.19 and login with the “admin” account.

Please be noticed that this account is different from the video play password in the “Video settings” page.

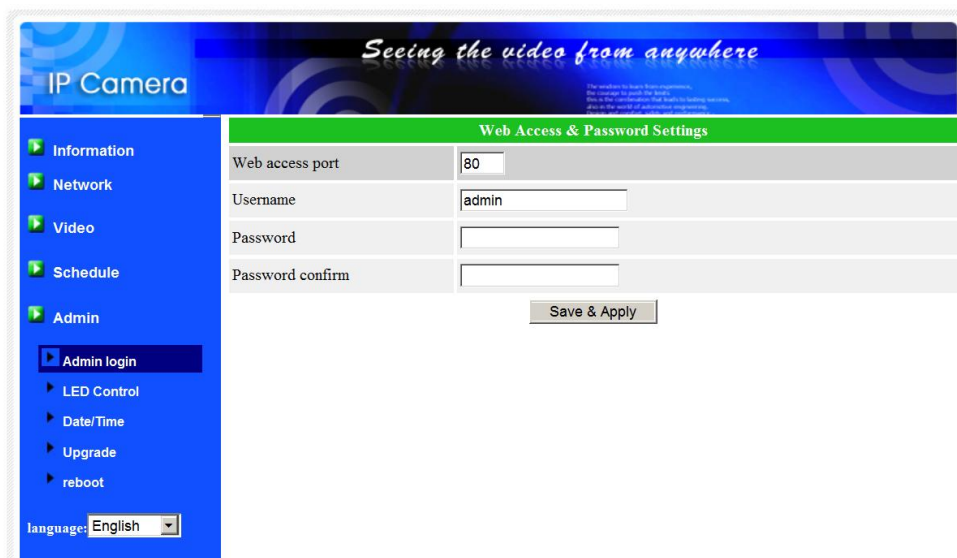


Figure 3-19: Admin settings page

3.15. Upgrade

If there is some new firmware available from the supplier of this IP CAM, you can upgrade the firmware on this page. Please ask for the correct information about FTP server, username/password account and firmware filename from your supplier, and then do this upgrade. A status message about the percentage done in the upgrade procedure is displayed. Please be noticed that during the upgrade procedure, do not power off the IP CAM. After the upgrade procedure is finished, the system will restart automatically.

You can upgrade from the ftp server or from the local file in your computer. During this upgrade procedure, do not try to modify other settings or view the video.

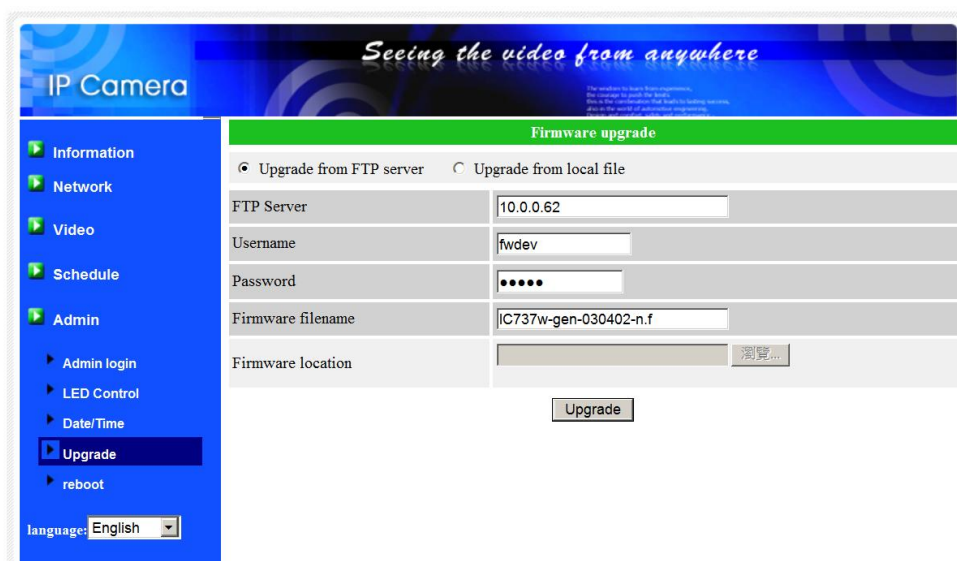


Figure 3-20: Firmware upgrade settings page

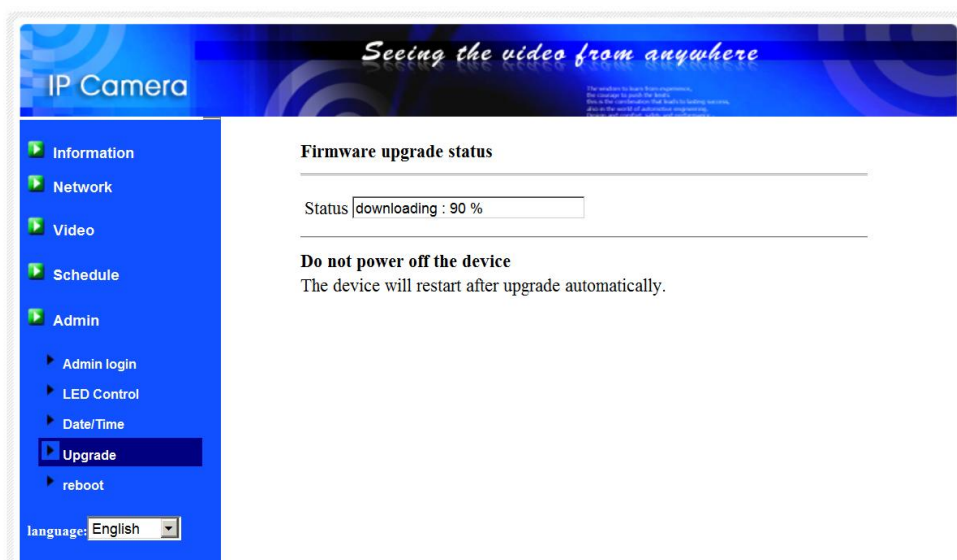


Figure 3-21: Firmware upgrade status page

3.16. Reboot

You can restart the IP CAM manually on this page. All the connected video viewing users will be disconnected.

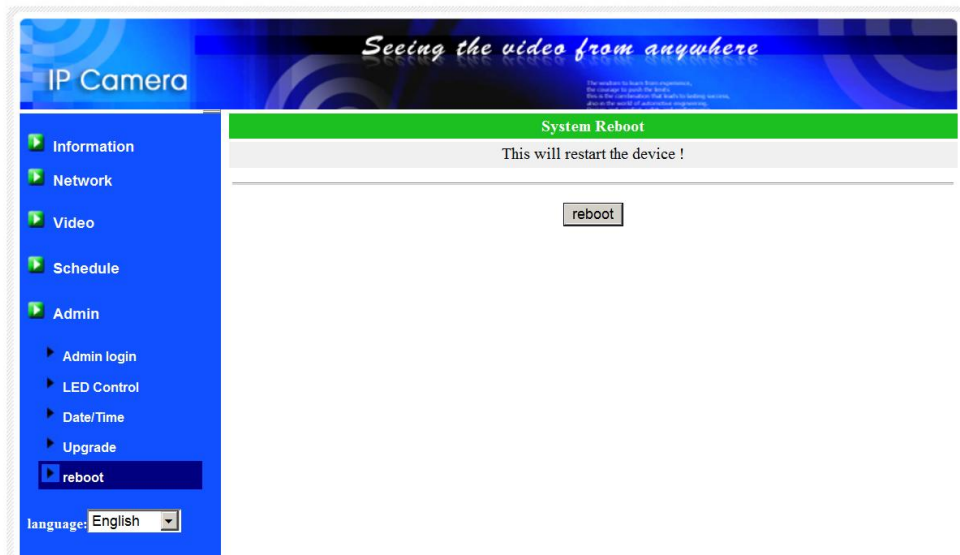


Figure 3-22: System reboot settings page

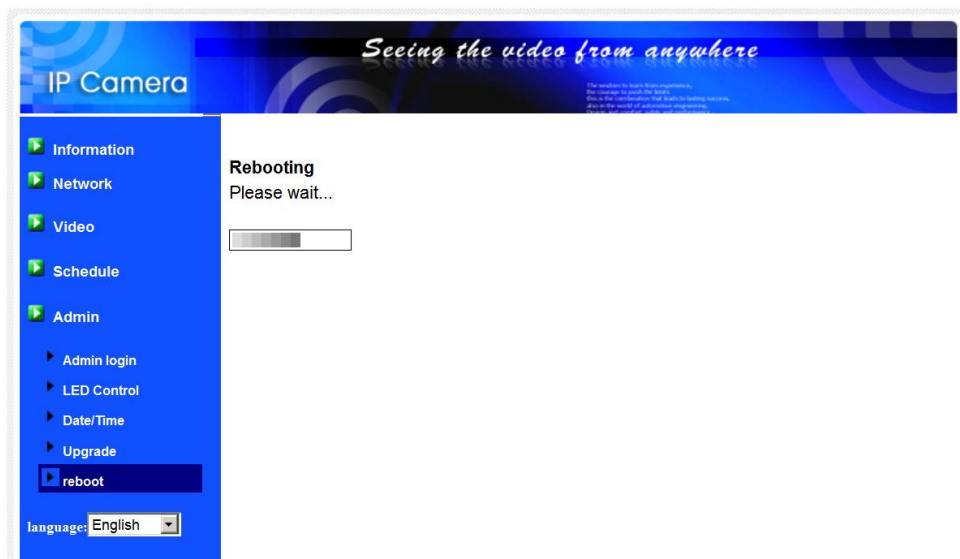


Figure 3-23: System reboot under-going page

3.17. Set to factory default

For some reason, for example you forgot the web login password, you may want to set the IP CAM to the factory default settings. The only thing you need to do is using a stick to press the “reset” button on the back of the IP CAM body for more than 4 **seconds** and release it, do this when the IP CAM is powered on. The IP CAM will reset to the factory default settings and restart automatically.

The web login account will be “admin” (no password), the play-video password will be “ipcam” after reset to factory default.

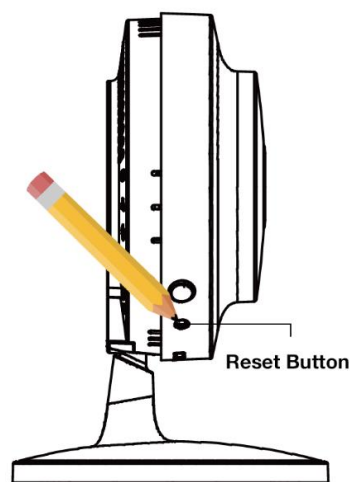


Figure 3-24: Stick on the reset button to set to the factory default

4. Features and specifications

4.1. Features

- Full HD, video resolution 1920x1080 for 30 fps
- Wide angle lens up to 120 degree(horizontal)
- Plug & play by ID/password, no IP address or DNS settings.
- H.264 video compression
- Day and night video with high power IR led.
- Two way audio, internal speaker.
- SD card video recording with 5 seconds of pre-recording..
- Time lapse video recording
- 2.4G Hz WiFi with WEP and WPA/WPA2 security support.
- WPS (WiFi Protected Setup) support.
- Triple video streaming on PC, mobile and SD card recording.
- Night mode control – support automatic, manual and scheduled modes.
- Connect up to 8 users simultaneously
- Bundle with free video management software mCamView2
- Push notification on iPhone/iPad and Android for motion and sound detection.
- Email alarm message for motion and sound detection.
- Event scheduling.
- Video recording on NAS device.
- Cloud storage on Dropbox
- Internal real time clock
- Watchdog function to prevent system failure.

Full HD IP Camera

4.2. Specifications

Models	Mini Full HD IP camera
Power	DC 5V, 1.5A
Processors	RISC CPU, hardware video processing and compression.
Wireless interface	2.4 GHz WiFi Range : 100 meters line of sight
Full HD	Resolution 1920x1080
Image sensor	RGB 2 Mega 1/2.7 inch CMOS Automatic exposure control, automatic white balance, automatic gain control, automatic brightness control.
Light sensitivity	0.2 Lux (IR LED off) 0 Lux (with 10 meters IR LED on) Automatically turn on the IR LED on low light environment.
Lens	M12, 2.8 mm, F2.0, viewing angle- horizontal:120° fixed iris. focus range: 50 cm to infinity
Buttons	One reset button, to factory default settings One WPS button for automatic WiFi setup
Indicators	One LED for Internet connection status indication One LED for WiFi connection indication One LED for SD card recording indication
Video compression	H.264, high profile
Video streaming	Separate frame rate/resolution/bandwidth settings for PC and mobile.
Video settings	Resolution: (FHD)1920x1080, (HD)1280x720, VGA(640x360) Bandwidth : 64k, 128k, 256k, 512k, 768k, 1M, 1.2M, 1.5M, 2M, 3M bps Frame rate : 1~5, 10, 15, 20, 25, 30 fps
Audio	Built-in microphone for audio monitoring Built-in 0.5W speaker for alarm and half-duplex two-way audio. Audio compression: G.711
Security	Web management username/password protection Video display ID/password protection

Full HD IP Camera

Installation, management and maintenance	WiFi WEP and WPA/WPA2 security mode Plug & play by ID/password. Video management software-CamView for video access and multi-camera management Firmware upgrades via FTP
Web browsing	Built-in web server for standard web browser access Video display on IE browser Video snapshot on any browser
Supported protocols	IPv4, HTTP, TCP, ICMP, RTSP, RTP, UDP, RTCP, SMTP, SNTP, FTP, DHCP, ARP, DNS, PPPoE, etc.
Accessories (included)	Power adaptor, quick installation guide, ID/Password card.
App	App mCamView2 for Android and iPhone/iPad
Users	Up to 8 simultaneous unicast users (depends on video settings)
Alarm and event management	Events triggered by motion and sound detection Email alarm message Push notification on iPhone/iPad and Android devices.
Dimensions (HxWxD) and weight	102 x 76 x 68 mm, 101 g, incl. camera bracket, excl. power adaptor
Operating conditions	0-50 °C Humidity 20 – 80% RH (non-condensing)

5. Package contents



Figure 5-1: The IP camera body



Figure 5-2: Power extension cable

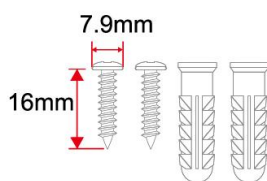


Figure 5-3: Anchors and Screws

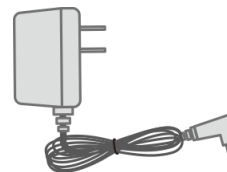


Figure 5-4: Power Adaptor

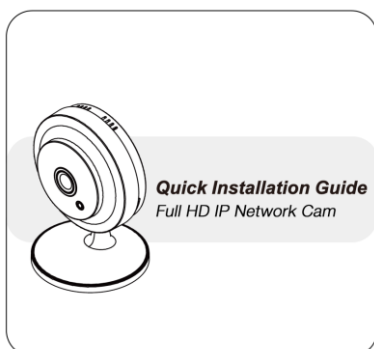


Figure 5-5: Quick installation guide



Figure 5-6: ID/Password Card

Appendix A. Remote Viewing through NAT/router

Devices

Almost all the NAT/router devices in the market can work with the IP CAM and CamView software when viewing in a remote location. You do not need to do any modification on the default settings of the NAT/routers. In some office environment, if some strict firewall function is enabled, it's possible that you can not view the IP CAM video through the firewall router. In this situation, please contact your MIS person to solve the problem.

Appendix B. Performance Information

1. Video Performance Information

The video quality is dependent on the video parameter settings and the network quality. If you want to have a better video quality, you will usually set higher resolution and higher frame rate. This is fine when you are viewing the video locally in the same network. But when you want to see the video remotely through the Internet, you need to know the Internet speed (bandwidth) connected to your home network. If the “Internet speed” setting of your IP camera is very large, but your real Internet speed (bandwidth) is relatively low, the video quality could be very bad. In some worst case, the video display could be disconnected. In order to have the best video quality, you better have broadband service from your ISP and set the “Internet speed” of the IP camera a little lower than the real Internet speed provided by your ISP.

Also need to notice that when multiple users are displaying the videos from the same IP camera at the same time, the video bandwidth times number of users will be needed for the Internet speed.

2. WiFi Performance Information

The WiFi performance is dependent on the distance between the IP camera and the AP (Access Point) / router and dependent on the number of devices connected to the AP/router. Also need to consider that if there are any barriers like wall or floor between the IP camera and the AP/router. IF there are some open space between the IP camera and the AP/router, you also need to know that the performance will be interfered in rainy day. The antenna gain and it's direction in the AP/router will also affect the WiFi performance. In general case, when the IP camera is set to the default video setting (1M bps) and there are no other interferences between the IP camera and the AP/router, the working straight distance is about 100 meters between IP camera and the AP/router.

3. Motion detection Performance Information

The motion detection is based on the video change of the camera, any video change including moving objects(car, human, pet, door, leaves) and even light change (turn on/off light or light change in the morning/evening) could trigger the detection. The sensitivity of the motion detection is based on the size of the moving objects, more sensitive means the detection of smaller objects.

Appendix C. Trouble shooting

- 1. What's going on when the red led light on the IP camera is flashing?**

A: When the IP Cam is connected to the Internet and working correctly, the red led light will be on constantly. If the red led light is flashing, it's probably because there is some network connecting problem. Please check the network connection again and follow the instructions on the user manual to set it up again.
- 2. When the IP Cam is connected to the network through wireless connection, the video quality is not good, how could I fix this problem?**

A: When the IP Cam is connected using wireless network and the video quality is not good, it's probably because the distance of the IP Cam is too far away from the wireless AP(Access Point) or WiFi router, or there are too many devices connected to the AP, or maybe because the WiFi antenna is not in the best position. Please try to figure out which one is the cause of the problem and you can then fix this problem.
- 3. Could I adjust the effective focus of the IP Cam?**

A: The effective focus of the IP Cam is from 30cm to infinity, so, in almost all circumstances you can see the video clearly. There is no need to adjust the effective focus.
- 4. What's the viewing angle of the IP Cam?**

A: The viewing angle of the IP Cam is about 70 degrees.
- 5. What's the longest distance using the IP Cam to see the video?**

A: When using the IP Cam to see a long-distance object, whether it's clear or not depends on the size of the object. Usually when your eyes can see something clearly in that distance, the IP Cam can also see that object clearly in about the same distance.
- 6. What should I do if the password is forgotten, and the ID/password card is missing?**

A: The easiest way to solve this problem is to reset the IP Cam to the factory default. Please stick on the reset button on the rear panel of the IP Cam for more than 3 seconds and release it. The IP Cam will then restart to the factory default. The default administrator account is "admin", administrator password is empty. The default video-play password is "ipcam". You can adjust these account and passwords by using the browser to login into the IP Cam and do the needed modifications.
- 7. What should I do if I can not hear the audio sound from the IP Cam?**

A: There is a microphone inside the IP Cam. If you can see the video from the accompanied CamView software, but can not hear the audio sound, please check the followings:

 - (1). Check if the speaker of the computer is turned on, you can try to play an audio file on the computer to verify this.
 - (2). Check if the microphone on the IP Cam is enabled. Please login into the web configuration page of the IP Cam or open the "video settings" from CamView, select the "video" settings, click the "Enable audio microphone" choice.
- 8. I can see the video in a remote place, but the video quality is not good and sometimes the video will disconnect and then the video will reconnect again by itself.**

Full HD IP Camera

A: It's probably because the internet bandwidth (internet speed) is not big enough. Please try to apply for a better internet connection from your Internet Service Provider or decrease the bandwidth settings of the IP Cam. You can adjust the bandwidth requirement of the IP Cam either from the CamView software or login into the web configuration page of the IP Cam to do the modification.

9. Does the IP Cam provide the recording function?

A: You can do the recording of the video/audio of the IP Cam from the CamView. Another software CamPlay is needed to play the recorded vide/audio files. The camera could also do recording on Micro-SD card and NAS devices.

10. The video seems a little dark when the IP Cam is used inside the house, how could I improve this?

A: You can increase the "Low light sensitivity" in the "video settings" page either through web configuration or through CamView settings to "High" or "Very high". This will tremendously improve the video quality in dark environment.

Appendix D. Snapshot picture on any browser

If you want to have the live snapshot picture on any browser, use the URL http://ip_address/snapshot.cgi to access the snapshot of the camera. The ip_address is the IP address of the camera. This works for all the browsers on computer or mobile device. The only limitation is that the computer or mobile device needs to be on the same network as the camera or the camera has public IP address. This is only for some special case usage, not recommended for general users.